

IRONRIDGE XR FLUSH MOUNT PHOTOVOLTAIC PANEL RACKING SYSTEM WITH IRONRIDGE FLASHFOOT2 ROOF ATTACHMENTS

GENERAL NOTES:

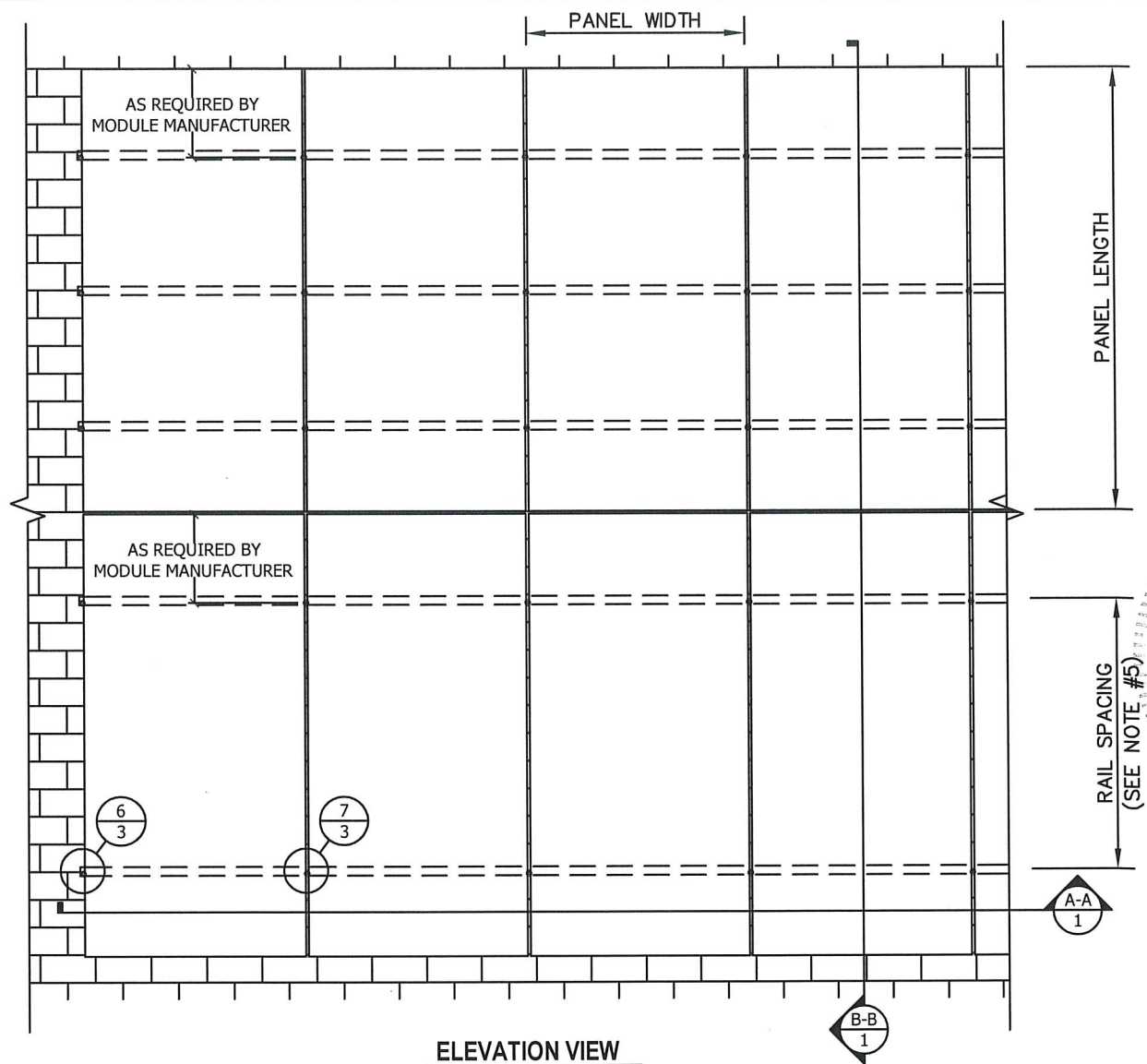
- THIS SYSTEM MEETS ALL OF THE REQUIREMENTS OF THE 7TH EDITION (2020) FLORIDA BUILDING CODE, INCLUDING THE HVHZ PROVISIONS.
- THIS SYSTEM HAS BEEN TESTED PER TAS 100(A) AND ASTM D7147. IT IS NOT A PART OF THE BUILDING ENVELOPE, AND IMPACT RESISTANCE IS NOT REQUIRED.
- THIS SYSTEM SHALL BE INSTALLED PER THE IRONRIDGE XR FLUSH MOUNT INSTALLATION MANUAL.
- THE PV PANELS ARE BY OTHERS AND ARE NOT A PART OF THIS APPROVAL.
- RAIL SPACING TO BE AS SPECIFIED BY THE PV PANEL MANUFACTURER'S INSTALLATION INSTRUCTIONS.
- THE DESIGN OF THE ROOF SUBSTRATE IS THE RESPONSIBILITY OF THE ENGINEER OF RECORD OR OTHER SPECIALTY ENGINEER, AND IS NOT A PART OF THIS APPROVAL. THE SUBSTRATE MUST SAFELY TRANSMIT THE LOADS APPLIED TO THIS SYSTEM TO THE BUILDING STRUCTURE.
- FIRE RATINGS OR FIRE RESISTANCE IS NOT A PART OF THIS REVIEW.
- ALL ANCHORS SECURING THE SYSTEM TO PRESSURE TREATED WOOD SHALL BE CAPABLE OF RESISTING CORROSION CAUSED BY THE CHEMICALS IN THE WOOD.
- MATERIALS INCLUDING BUT NOT LIMITED TO STEEL/METAL SCREWS THAT COME INTO CONTACT WITH OTHER DISSIMILAR MATERIALS SHALL BE PROTECTED PER FBC REQUIREMENTS.
- NO INCREASE IN ALLOWABLE STRESS HAS BEEN USED IN THE DESIGN OF THIS PRODUCT. Cd=1.6 WAS USED FOR WOOD SCREWS ONLY.

WINDLOAD NOTES:

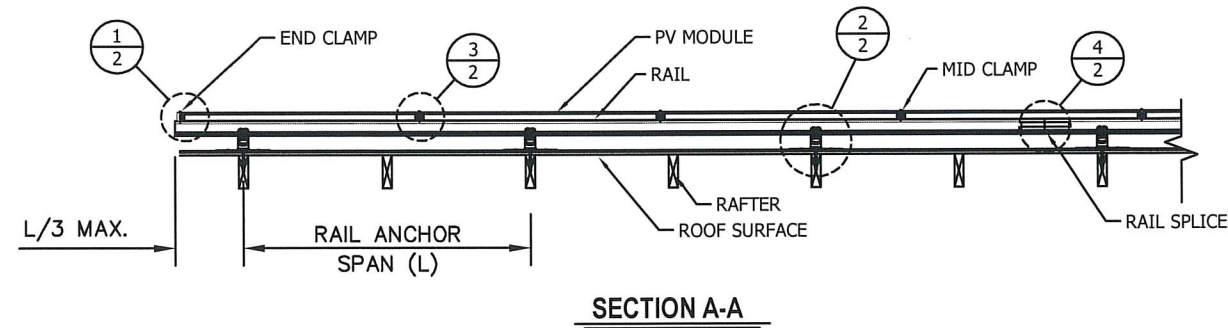
- DESIGN WINDLOADS MUST BE CALCULATED BY A LICENSED PROFESSIONAL ENGINEER OR ARCHITECT FOR EACH PROJECT, PER ASCE 7-16 SECTION 29.4.4. DESIGN WINDLOADS MAY NOT EXCEED THE ALLOWABLE WINDLOADS SHOWN IN THE CHARTS ON THIS SHEET OR SHEET 5.
- PANEL SYSTEM LOCATION, HEIGHT, AND SPACING MUST MEET THE REQUIREMENTS OF ASCE 7-16 SECTION 29.4.4. WINDLOADS ACT NORMAL TO THE SURFACE OF THE PV PANEL SYSTEM.
- OTHER CONFIGURATIONS REQUIRE PROJECT SPECIFIC ANALYSIS BY A LICENSED PROFESSIONAL ENGINEER OR ARCHITECT.
- ALLOWABLE WINDLOADS BELOW ARE BASED ON ANCHORING IN WOOD RAFTERS WITH S.G.=0.55 MIN. SEE SHEET 5 FOR ALLOWABLE LOADS BASED ON RAFTERS WITH OTHER SPECIFIC GRAVITY VALUES.

THREE RAIL SYSTEM:

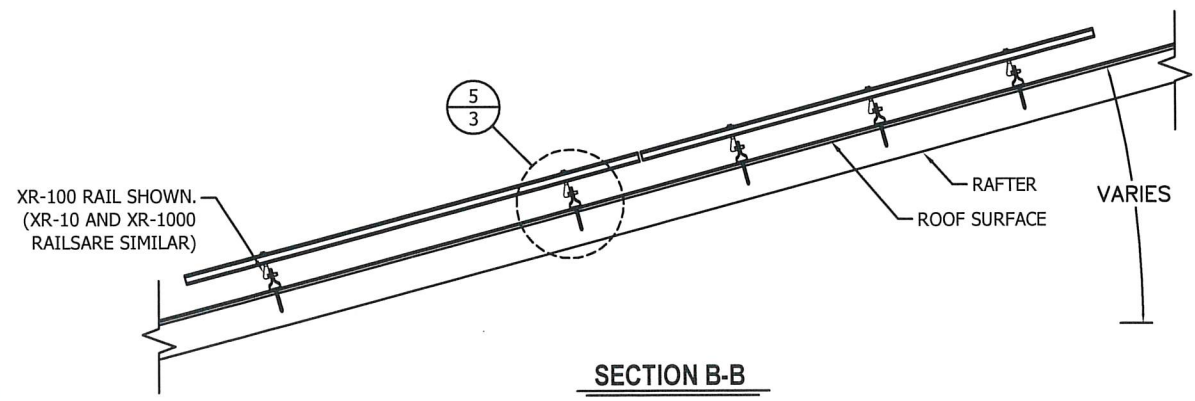
TWO RAIL SYSTEM:



ELEVATION VIEW



SECTION A-A



SECTION B-B

ALLOWABLE WINDLOADS

TWO RAIL SYSTEM						THREE RAIL SYSTEM						
PANEL WIDTH (in)	PANEL LENGTH (in)	ANCHOR SPAN (L) (in)	XR-10 RAIL (+/- psf)	XR-100 RAIL (+/- psf)	XR-1000 RAIL (+/- psf)	PANEL WIDTH (in)	PANEL LENGTH (in)	ANCHOR SPAN (L) (in)	XR-10 RAIL (+/- psf)	XR-100 RAIL (+/- psf)	XR-1000 RAIL (+/- psf)	
45	67 1/2	16	90	90	90	45	67 1/2	16	135.0	135.0	135.0	
		24	65.4	90	90			24	98.1	135.0	135.0	
		32	56.1	90	90			32	84.2	135.0	135.0	
		36	49.9	90	90			36	74.9	135.0	135.0	
		48	37.4	85.6	90			48	56.1	128.4	135.0	
		64	28	64.2	68.7			64	42.0	96.3	103.1	
	80	72	23.7	54	59.8	72	35.6	81.0	89.7			
		16	75.9	75.9	75.9	45	80	16	113.9	113.9	113.9	
		24	55.2	75.9	75.9			24	82.8	113.9	113.9	
		32	47.3	75.9	75.9			32	71.0	113.9	113.9	
		36	42.1	75.9	75.9			36	63.2	113.9	113.9	
		48	31.6	72.2	75.9			48	47.4	108.3	113.9	
	64	23.7	54.2	58	64			35.6	81.3	87.0		
	86	72	20	45.6	50.5	72	30.0	68.4	75.8			
		16	70.6	70.6	70.6	45	86	16	105.9	105.9	105.9	
		24	51.3	70.6	70.6			24	77.0	105.9	105.9	
		32	44	70.6	70.6			32	66.0	105.9	105.9	
		36	39.1	70.6	70.6			36	58.7	105.9	105.9	
		48	29.4	67.2	70.6			48	44.1	100.8	105.9	
	64	22	50.4	54	64			33.0	75.6	81.0		
	92 1/2	72	18.6	42.4	46.9	72	27.9	63.6	70.4			
		16	79.7	65.7	65.7	45	92 1/2	16	119.6	98.6	98.6	
		24	47.7	65.7	65.7			24	71.6	98.6	98.6	
		32	40.9	65.7	65.7			32	61.4	98.6	98.6	
36		36.4	65.7	65.7	36			54.6	98.6	98.6		
48		27.3	52.5	65.7	48			41.0	78.8	98.6		
64	20.5	46.9	50.2	64	30.8			70.4	75.3			
LANDSCAPE LAYOUT:	45	92 1/2	16	79.5	65.7	65.7	45	92 1/2	16	119.3	98.6	98.6
			24	52.9	65.7	65.7			24	79.4	98.6	98.6
			32	40.8	65.7	65.7			32	61.2	98.6	98.6
			36	36	65.7	65.7			36	54.0	98.6	98.6
			48	24.2	55	65.7			48	36.3	82.5	98.6
			64	20.5	46.9	65.7			64	30.8	70.4	98.6
72	18.2	41.7	65.7	72	27.3	62.6	98.6					

SCOTT WOLTERS
FL PE# 62354

WOLTERS ENGINEERING
(COA# 27194)
15211 97TH ROAD N
WEST PALM BEACH, FL 33412
(561) 225-1982

IRONRIDGE

PHONE: (800) 227-9523
info@ironridge.com

28357 INDUSTRIAL BLVD.
HAYWARD, CA 94545

DATE: 12/19/22

REV.#: 1

1ST SUBMITTAL

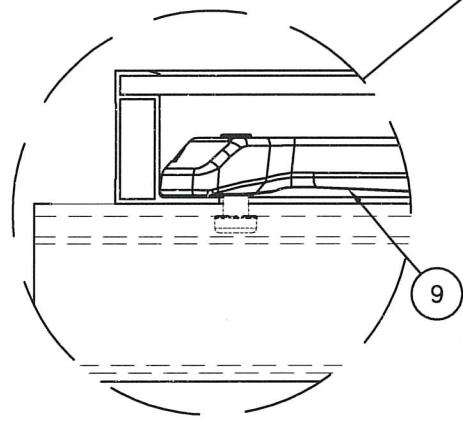
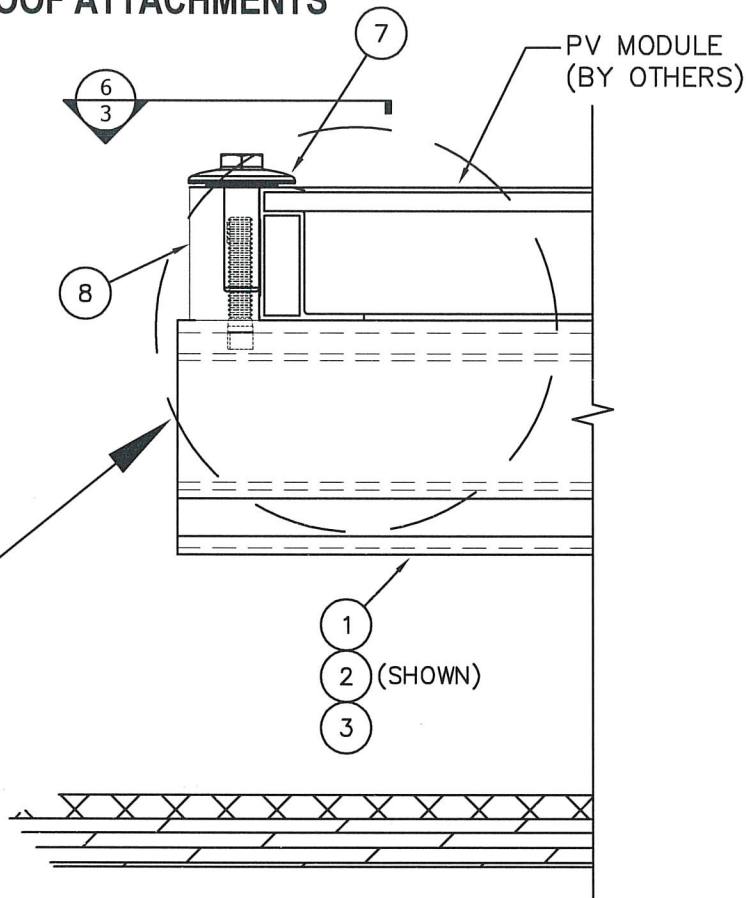
PRINTS ISSUED FDR

SEAL: SCOTT WOLTERS
No. 62354
STATE OF FLORIDA
DEC 19 2022
PROFESSIONAL ENGINEER

DWG: XR-FF2

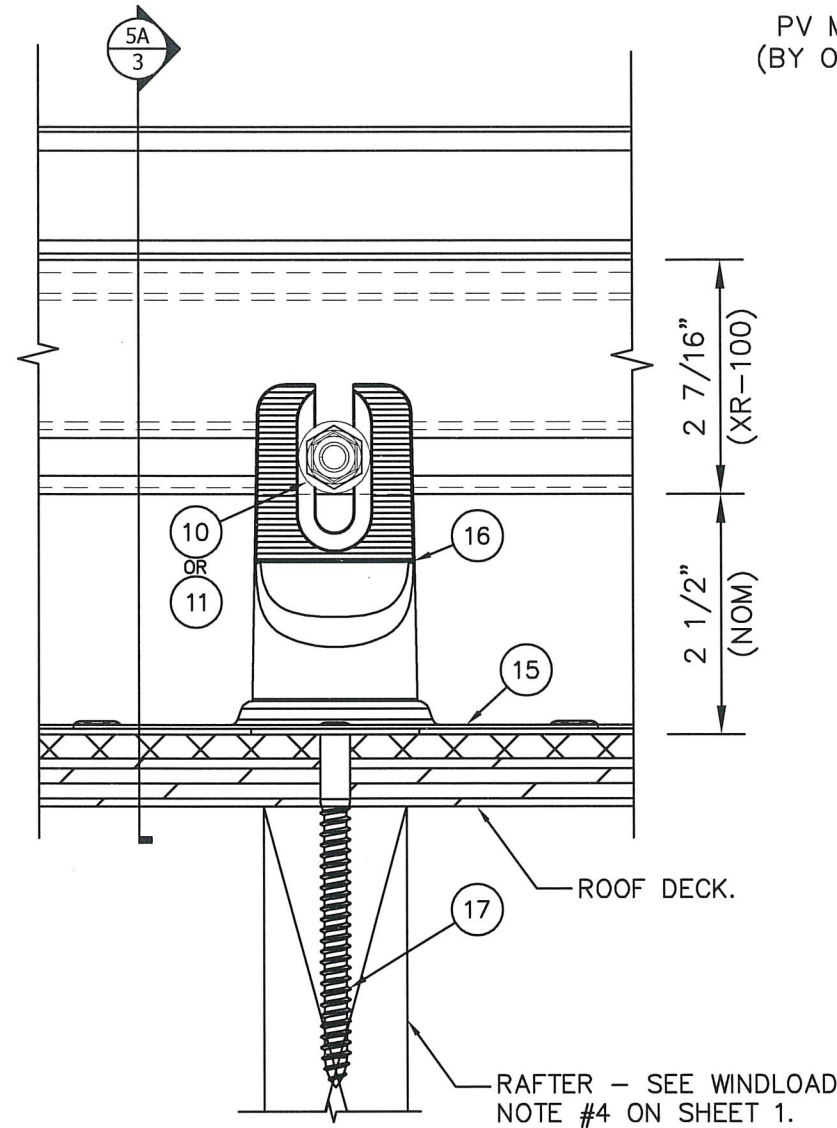
SHEET: 1/7

**IRONRIDGE XR FLUSH MOUNT PHOTOVOLTAIC PANEL RACKING SYSTEM
WITH IRONRIDGE FLASHFOOT2 ROOF ATTACHMENTS**

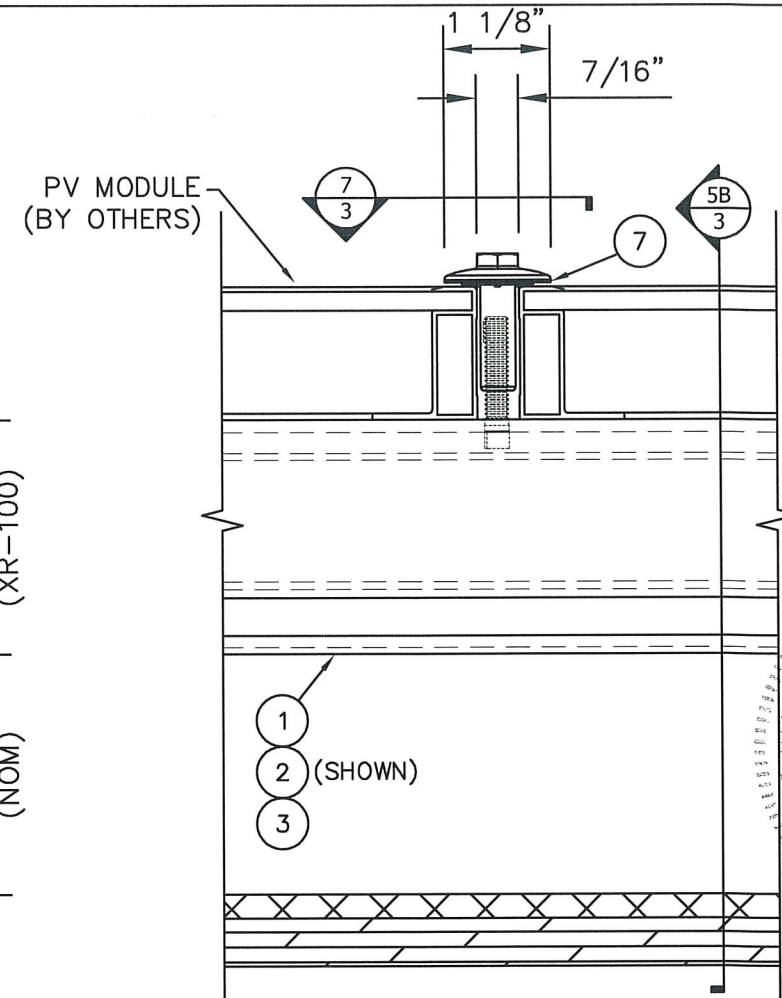


1B
2
ALTERNATE CAMO
END-CLAMP DETAIL

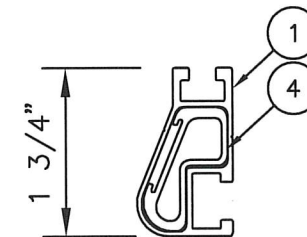
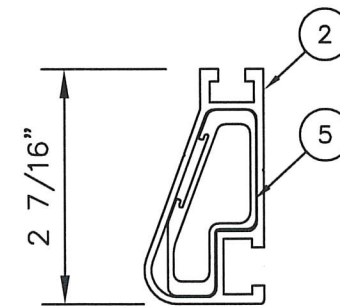
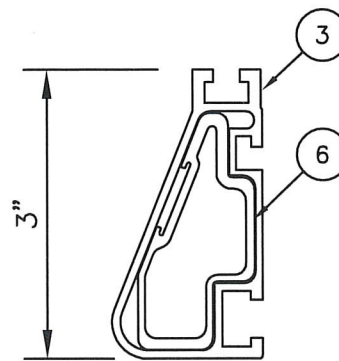
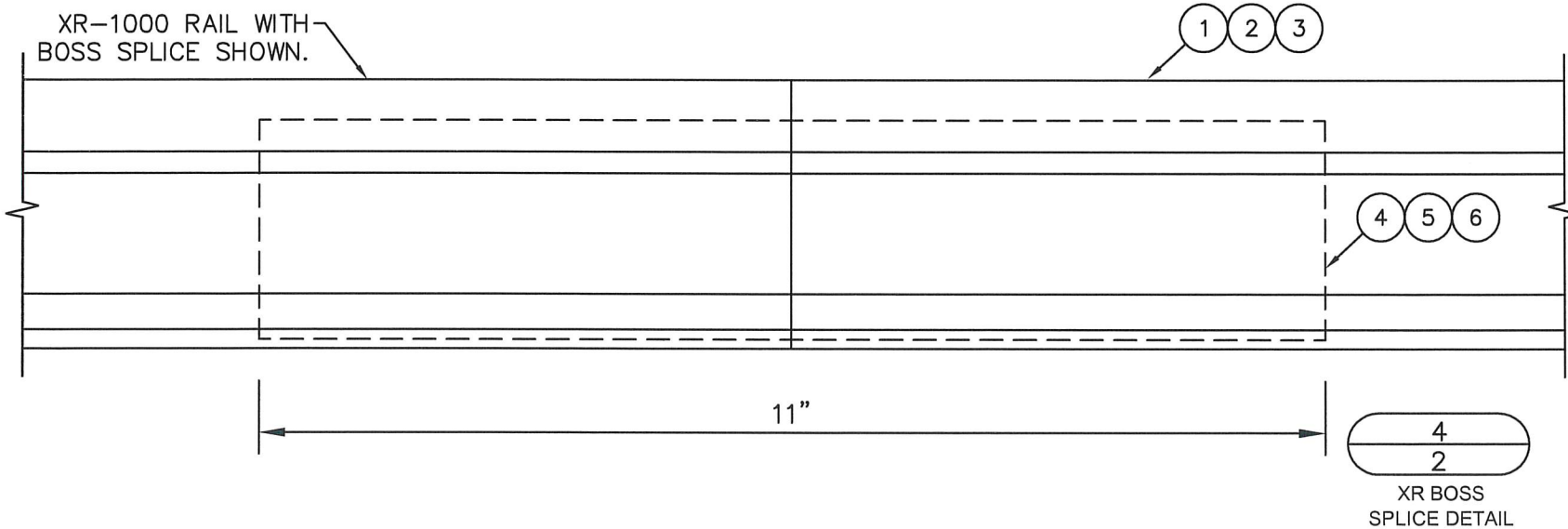
1
2
UFO END-CLAMP
WITH STOPPER SLEEVE



2
2
FLASHFOOT2 DETAIL

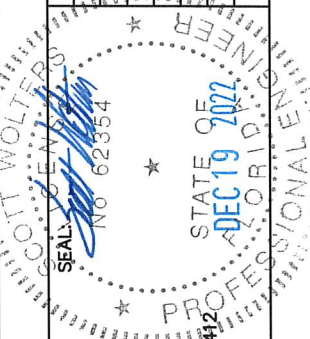


3
2
IRONRIDGE UFO
MID-CLAMP DETAIL



SPLICE MAY NOT BE
LOCATED IN A CANTILEVER.

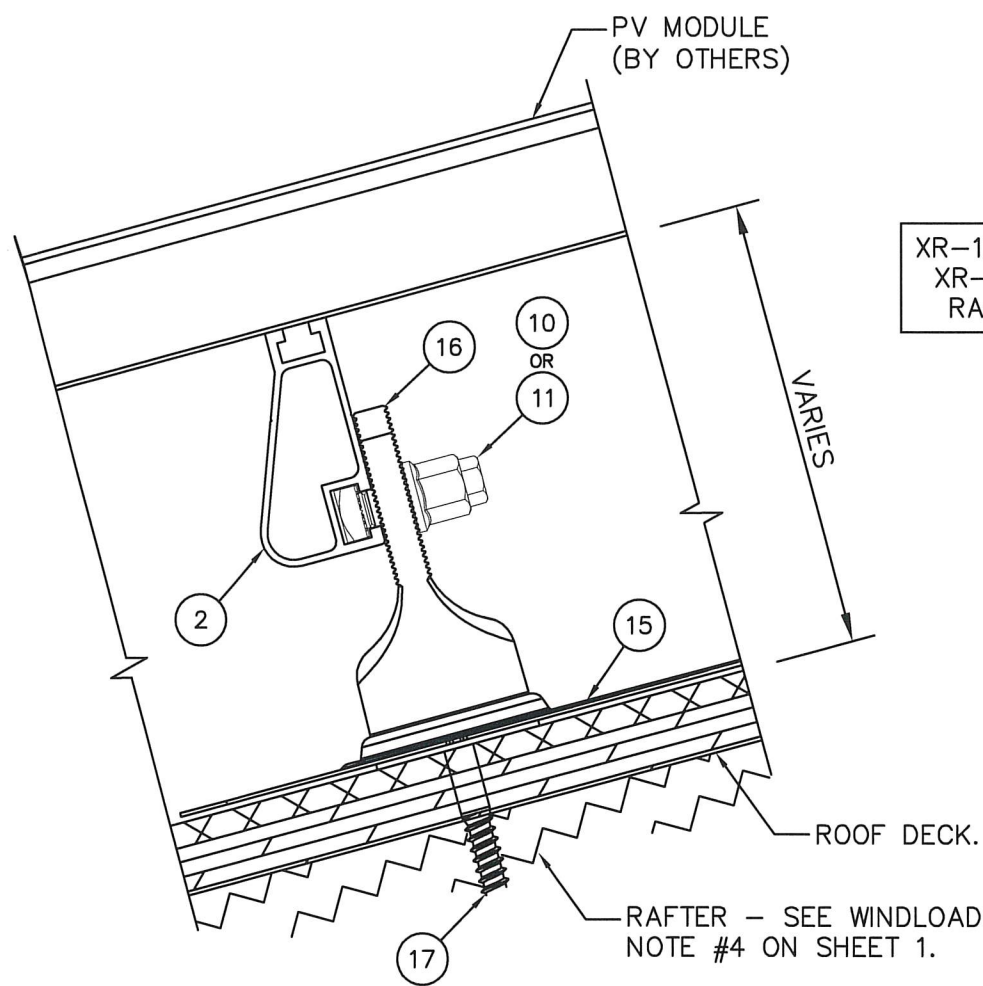
REV.#	DATE
1	12/19/22
2	
3	
4	
5	
6	
7	
8	
9	
10	
11	
12	
13	
14	
15	
16	
17	
18	
19	
20	
21	
22	
23	
24	
25	
26	
27	
28	
29	
30	
31	
32	
33	
34	
35	
36	
37	
38	
39	
40	
41	
42	
43	
44	
45	
46	
47	
48	
49	
50	
51	
52	
53	
54	
55	
56	
57	
58	
59	
60	
61	
62	
63	
64	
65	
66	
67	
68	
69	
70	
71	
72	
73	
74	
75	
76	
77	
78	
79	
80	
81	
82	
83	
84	
85	
86	
87	
88	
89	
90	
91	
92	
93	
94	
95	
96	
97	
98	
99	
100	



SCOTT WOLTERS
FL PE# 62354
WOLTERS ENGINEERING
(COA# 27194)
15211 97TH ROAD N
WEST PALM BEACH, FL 33412
(561) 225-1982

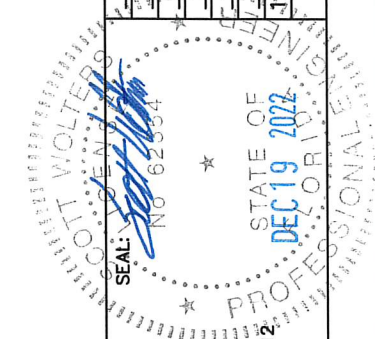
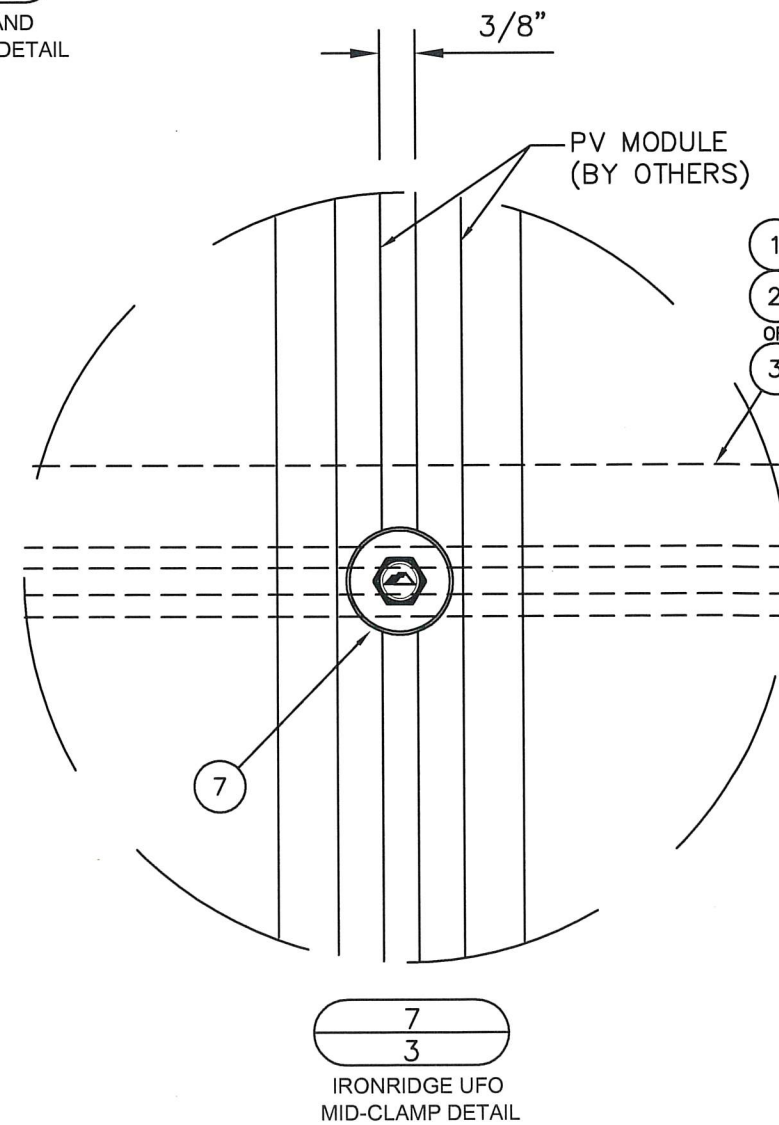
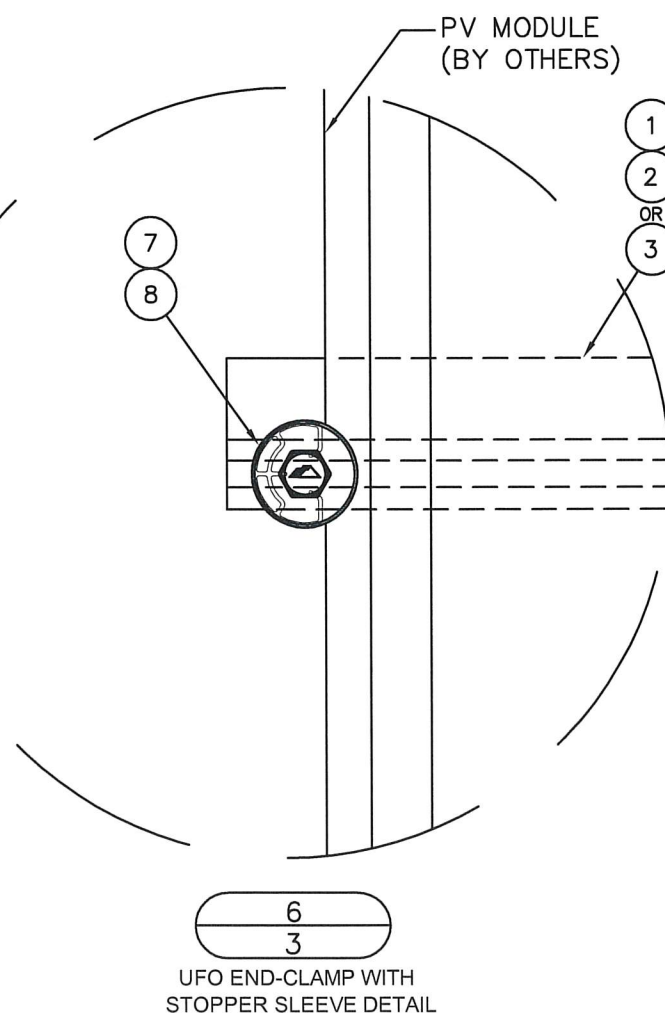
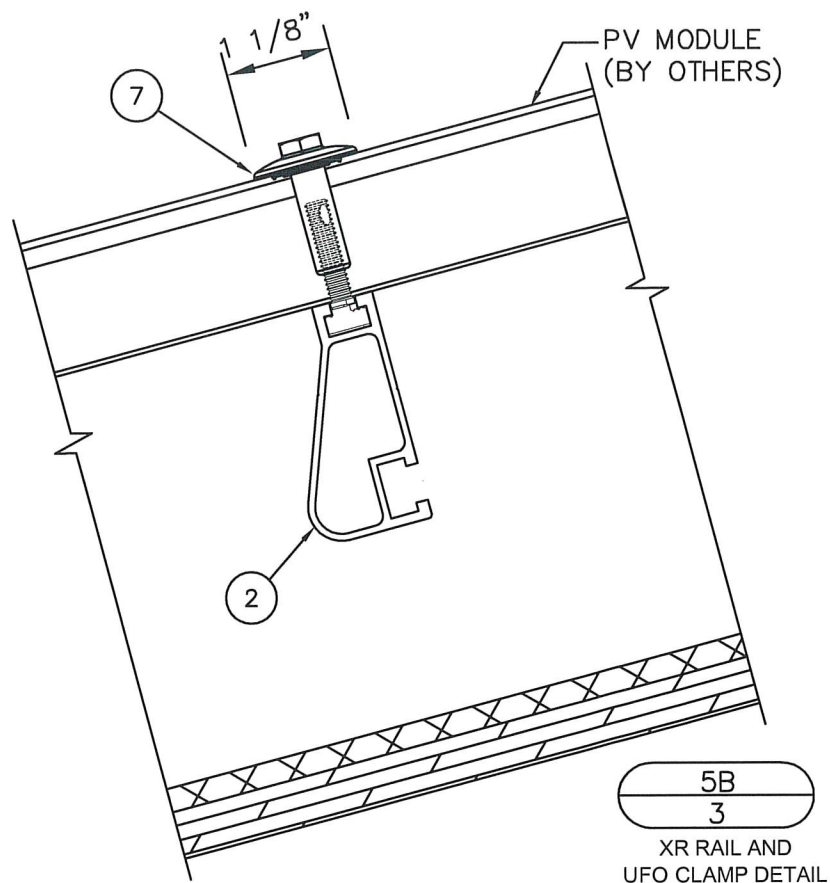
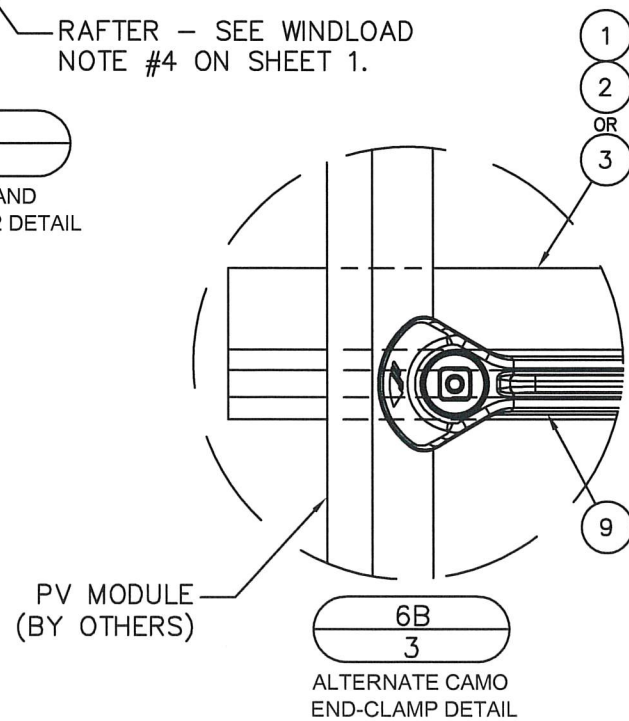
IRONRIDGE
PHONE: (800) 227-9523
info@ironridge.com
28357 INDUSTRIAL BLVD.
HAYWARD, CA 94545

**IRONRIDGE XR FLUSH MOUNT PHOTOVOLTAIC PANEL RACKING SYSTEM
WITH IRONRIDGE FLASHFOOT2 ROOF ATTACHMENTS**



XR-100 RAIL IS SHOWN.
XR-10 AND XR-1000
RAILS ARE SIMILAR.

5A
3
XR RAIL AND
FLASHFOOT2 DETAIL



REV.#	DATE
1	12/19/22
2	
3	
4	
5	
6	
7	
8	
9	
10	
11	
12	
13	
14	
15	
16	
17	
18	
19	
20	
21	
22	
23	
24	
25	
26	
27	
28	
29	
30	
31	
32	
33	
34	
35	
36	
37	
38	
39	
40	
41	
42	
43	
44	
45	
46	
47	
48	
49	
50	
51	
52	
53	
54	
55	
56	
57	
58	
59	
60	
61	
62	
63	
64	
65	
66	
67	
68	
69	
70	
71	
72	
73	
74	
75	
76	
77	
78	
79	
80	
81	
82	
83	
84	
85	
86	
87	
88	
89	
90	
91	
92	
93	
94	
95	
96	
97	
98	
99	
100	

SCOTT WOLTERS
FL PE# 62354

WOLTERS ENGINEERING
(COA# 27194)
15211 97TH ROAD N
WEST PALM BEACH, FL 33412
(561) 225-1982

IRONRIDGE

28357 INDUSTRIAL BLVD.
HAYWARD, CA 94545

PHONE: (800) 227-9523
info@ironridge.com

IRONRIDGE XR FLUSH MOUNT PHOTOVOLTAIC PANEL RACKING SYSTEM WITH IRONRIDGE FLASHFOOT2 ROOF ATTACHMENTS

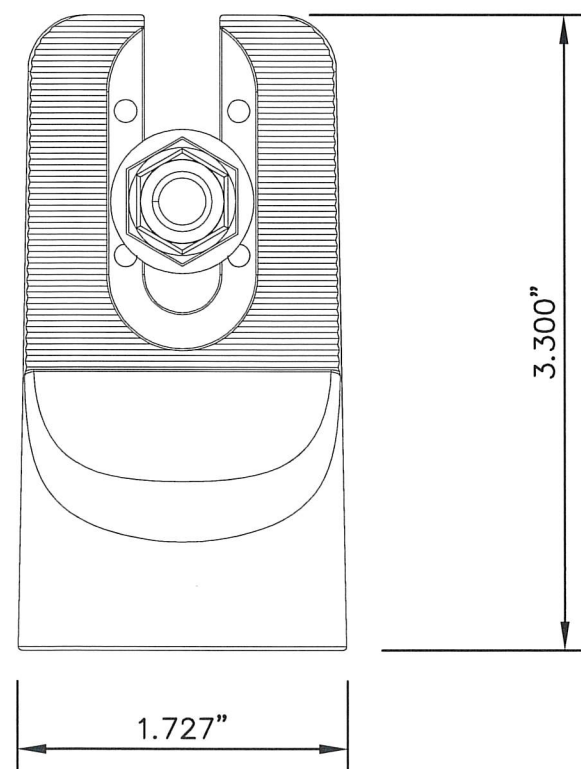
#	DESCRIPTION	MATERIALS/NOTES
15	ASSY, FLASHING, MILL OR BLACK	6000 SERIES AL
16	ASSY, CAP, MILL OR BLACK	300 SERIES AL
17	5/16" X 4 3/4" HWH LAG SCREW WITH EPDM WASHER	300 SERIES SS & EPDM

ALLOWABLE CAPACITY OF FF2 ANCHOR BASED ON RAFTER SPECIFIC GRAVITY		
WOOD SPECIFIC GRAVITY	ALLOWABLE UPLIFT CAPACITY (lb)	ALLOWABLE LATERAL CAPACITY F2 or F3 (lb)
0.42	732	364
0.46	839	380
0.5	951	396
0.55	1097	416

SEE CHARTS ON SHEETS 1 AND 5 FOR
ALLOWABLE WINDLOADS BASED ON
RAFTER SPECIFIC GRAVITY.

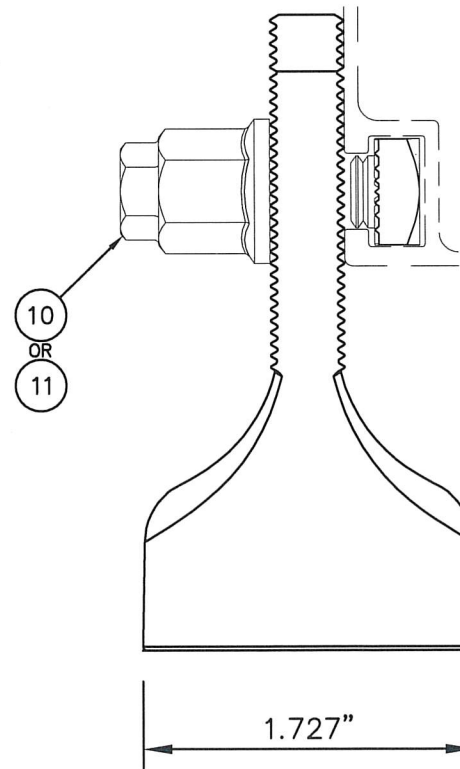
↑
Direct Tension/Uplift
(See Chart)

← **F2 = Lateral Shear**
(See Chart)

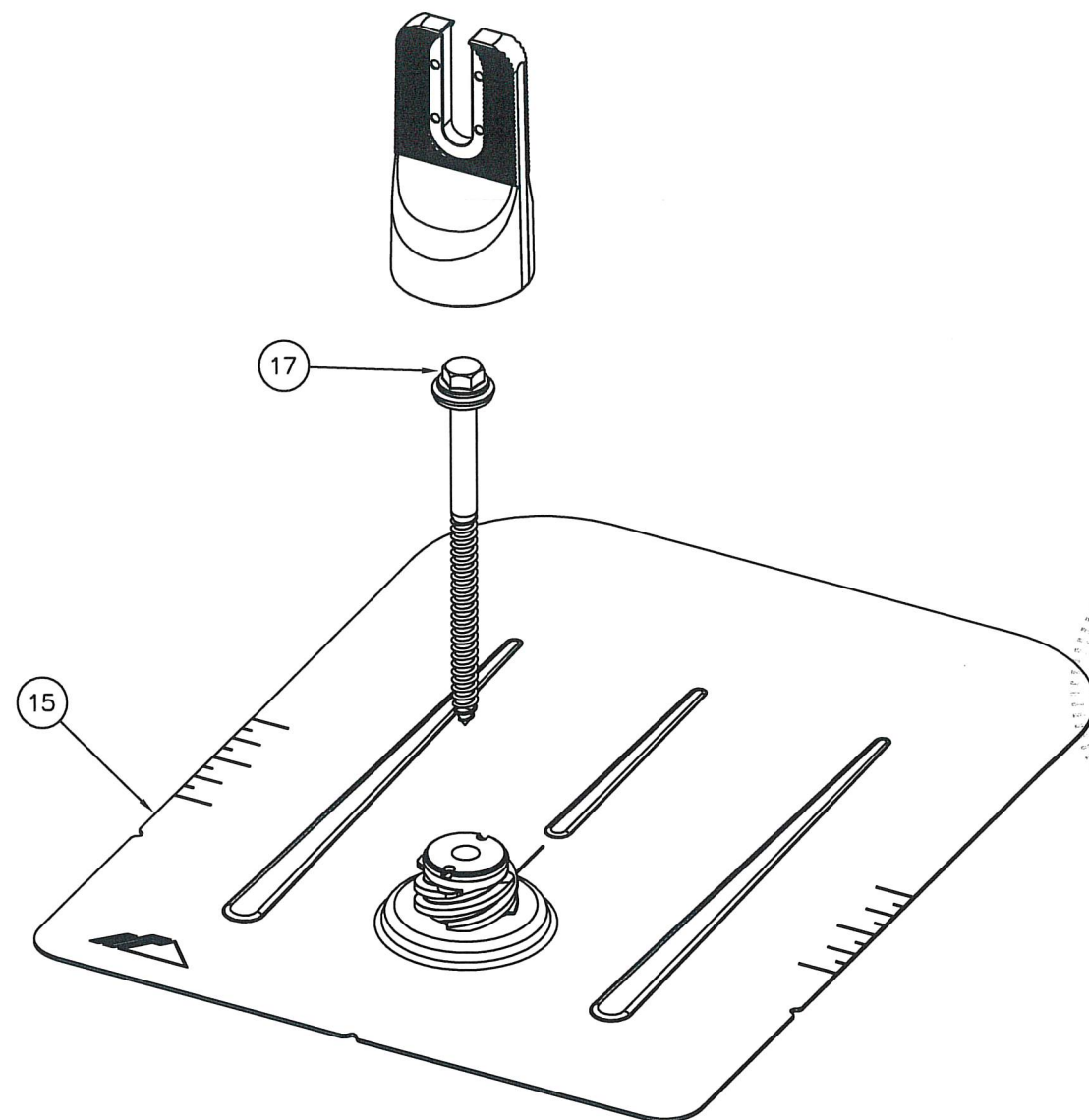


16

0.384"



→ **F3 = Lateral Shear**
(See Chart)



ANCHOR NOTES:

CAPACITIES APPLY TO RAFTER SIZER OF 2x4 OR GREATER,
DECK THICKNESS OF 7/16" OR GREATER, AND LAG BOLTS
SECURED WITHIN THE CENTER 1/3 OF RAFTER WITH 2 1/2"
MIN. END DISTANCE.

SCOTT WOLTERS
FL PE# 62354

WOLTERS ENGINEERING
(COA# 27194)
15211 97TH ROAD N
WEST PALM BEACH, FL 33412
(561) 225-1982

12/19/22
DATE

1ST SUBMITTAL

REV.#

PRINTS ISSUED FOR

IRONRIDGE

28357 INDUSTRIAL BLVD.
HAYWARD, CA 94545

PHONE: (800) 227-9523
info@ironridge.com

DWG: XR-FF2

SHEET: 4/7

**IRONRIDGE XR FLUSH MOUNT PHOTOVOLTAIC PANEL RACKING SYSTEM
WITH IRONRIDGE FLASHFOOT2 ROOF ATTACHMENTS**

ALLOWABLE WINDLOADS (+/- psf)

TWO RAIL SYSTEM												THREE RAIL SYSTEM											
PANEL WIDTH (in)	PANEL LENGTH (in)	ANCHOR SPAN (L) (in)	XR-10 RAIL			XR-100 RAIL			XR-1000 RAIL			PANEL WIDTH (in)	PANEL LENGTH (in)	ANCHOR SPAN (L) (in)	XR-10 RAIL			XR-100 RAIL			XR-1000 RAIL		
			RAFTER SPECIFIC GRAVITY			RAFTER SPECIFIC GRAVITY			RAFTER SPECIFIC GRAVITY						RAFTER SPECIFIC GRAVITY			RAFTER SPECIFIC GRAVITY					
			SG=0.42	SG=0.46	SG=0.50	SG=0.42	SG=0.46	SG=0.50	SG=0.42	SG=0.46	SG=0.50				SG=0.42	SG=0.46	SG=0.50	SG=0.42	SG=0.46	SG=0.50	SG=0.42	SG=0.46	SG=0.50
45	67 1/2	16	72.9	83.5	90	72.9	83.5	90	72.9	83.5	90	67 1/2	16	109.4	125.3	135.0	109.4	125.3	135.0	109.4	125.3	135.0	
		24	65.4	65.4	65.4	72.9	83.5	90	72.9	83.5	90		24	98.1	98.1	98.1	109.4	125.3	135.0	109.4	125.3	135.0	
		32	56.1	56.1	56.1	72.9	83.5	90	72.9	83.5	90		32	84.2	84.2	84.2	109.4	125.3	135.0	109.4	125.3	135.0	
		36	49.9	49.9	49.9	69.4	79.5	90	69.4	79.5	90		36	74.9	74.9	74.9	104.1	119.3	135.0	104.1	119.3	135.0	
		48	37.4	37.4	37.4	65.1	74.6	84.5	65.1	74.6	84.5		48	56.1	56.1	56.1	97.6	111.9	126.8	97.6	111.9	126.8	
		64	28	28	28.1	45.9	52.5	59.6	45.9	52.5	59.6		64	42.0	42.0	42.2	68.9	78.8	89.4	68.9	78.8	89.4	
		72	23.7	23.7	23.7	39.9	45.7	51.9	39.9	45.7	51.9		72	35.6	35.6	35.6	59.9	68.6	77.9	59.9	68.6	77.9	
	80	16	61.5	70.5	75.9	61.5	70.5	75.9	61.5	70.5	75.9	80	16	92.3	105.8	113.9	92.3	105.8	113.9	92.3	105.8	113.9	
		24	55.2	55.2	55.2	61.5	70.5	75.9	61.5	70.5	75.9		24	82.8	82.8	82.8	92.3	105.8	113.9	92.3	105.8	113.9	
		32	47.3	47.3	47.3	61.5	70.5	75.9	61.5	70.5	75.9		32	71.0	71.0	71.0	92.3	105.8	113.9	92.3	105.8	113.9	
		36	42.1	42.1	42.1	58.6	67.1	75.9	58.6	67.1	75.9		36	63.2	63.2	63.2	87.8	100.7	113.9	87.8	100.7	113.9	
		48	31.5	31.5	31.6	54.9	62.9	71.3	54.9	62.9	71.3		48	47.3	47.3	47.4	82.4	94.4	107.0	82.4	94.4	107.0	
		64	23.7	23.7	23.7	38.7	44.3	50.3	38.7	44.3	50.3		64	35.6	35.6	35.6	58.1	66.5	75.5	58.1	66.5	75.5	
		72	20	20	20	33.7	38.6	43.8	33.7	38.6	43.8		72	30.0	30.0	30.0	50.6	57.9	65.7	50.6	57.9	65.7	
	86	16	57.2	65.6	70.6	57.2	65.6	70.6	57.2	65.6	70.6	86	16	85.8	98.4	105.9	85.8	98.4	105.9	85.8	98.4	105.9	
		24	51.3	51.3	51.3	57.2	65.6	70.6	57.2	65.6	70.6		24	77.0	77.0	77.0	85.8	98.4	105.9	85.8	98.4	105.9	
		32	44	44	44	57.2	65.6	70.6	57.2	65.6	70.6		32	66.0	66.0	66.0	85.8	98.4	105.9	85.8	98.4	105.9	
		36	39.1	39.1	39.1	54.5	62.4	70.6	54.5	62.4	70.6		36	58.7	58.7	58.7	81.7	93.6	105.9	81.7	93.7	105.9	
		48	29.3	29.3	29.4	51.1	58.5	66.3	51.1	58.5	66.3		48	44.0	44.0	44.1	76.6	87.8	99.5	76.6	87.8	99.5	
		64	22	22	22	36.0	41.2	46.8	36.0	41.2	46.8		64	33.0	33.0	33.0	54.0	61.8	70.2	54.0	61.8	70.2	
		72	18.6	18.6	18.6	31.3	35.9	40.7	31.3	35.9	40.7		72	27.9	27.9	27.9	47.0	53.9	61.1	47.0	53.9	61.1	
	92 1/2	16	53.2	61	65.7	53.2	61	65.7	53.2	61.0	65.7	92 1/2	16	79.8	91.5	98.6	79.8	91.5	98.6	79.8	91.5	98.6	
		24	47.7	47.7	47.7	53.2	61	65.7	53.2	61.0	65.7		24	71.6	71.6	71.6	79.8	91.5	98.6	79.8	91.5	98.6	
		32	40.9	40.9	40.9	53.2	61	65.7	53.2	61.0	65.7		32	61.4	61.4	61.4	79.8	91.5	98.6	79.8	91.5	98.6	
36		36.4	36.4	36.4	50.6	58	65.7	50.6	58.0	65.7	36		54.6	54.6	54.6	76.0	87.0	98.6	76.0	87.1	98.6		
48		27.3	27.3	27.3	47.5	52.4	61.9	47.5	54.4	61.9	48		41.0	41.0	41.0	71.2	78.6	92.9	71.2	81.6	92.9		
64		20.5	20.5	20.5	33.4	38.3	43.5	33.4	38.3	43.5	64		30.8	30.8	30.8	50.1	57.5	65.3	50.1	57.5	65.3		
72		17.3	17.3	17.3	29.1	33.4	37.8	29.1	33.4	37.8	72		26.0	26.0	26.0	43.7	50.1	56.7	43.7	50.1	56.7		

LANDSCAPE LAYOUT:

45	92 1/2	16	53.2	61	65.7	53.2	61	65.7	53.2	61	65.7	45	92 1/2	16	79.8	91.5	98.6	79.8	91.5	98.6	79.8	91.5	98.6
		24	50.6	52.4	52.9	53.2	61	65.7	53.2	61	65.7			24	75.9	78.6	79.4	79.8	91.5	98.6	79.8	91.5	98.6
		32	40.8	40.8	40.8	53.2	61	65.7	53.2	61	65.7			32	61.2	61.2	61.2	79.8	91.5	98.55	79.8	91.5	98.6
		36	36	36	36	50.6	58	65.7	50.6	58	65.7			36	54.0	54	54	76.0	87	98.55	76.0	87.0	98.6
		48	24.2	24.2	24.2	50.6	55	55	50.6	58	65.7			48	36.3	36.3	36.3	76.0	82.5	82.5	76.0	87.0	98.6
		64	20.5	20.5	20.5	46.9	46.9	46.9	50.6	58	65.7			64	30.8	30.75	30.75	70.4	70.35	70.35	76.0	87.0	98.6
		72	18.2	18.2	18.2	41.7	41.7	41.7	50.6	58	65.7			72	27.3	27.3	27.3	62.6	62.6	62.6	76.0	87.0	98.6

DATE: 12/19/22
REV.#
1ST SUBMITTAL
PRINTS ISSUED FDR

SCOTT WOLTERS
FL PE# 62354
WOLTERS ENGINEERING
(COA# 27194)
15211 9TH ROAD N
WEST PALM BEACH, FL 33412
(561) 225-1982



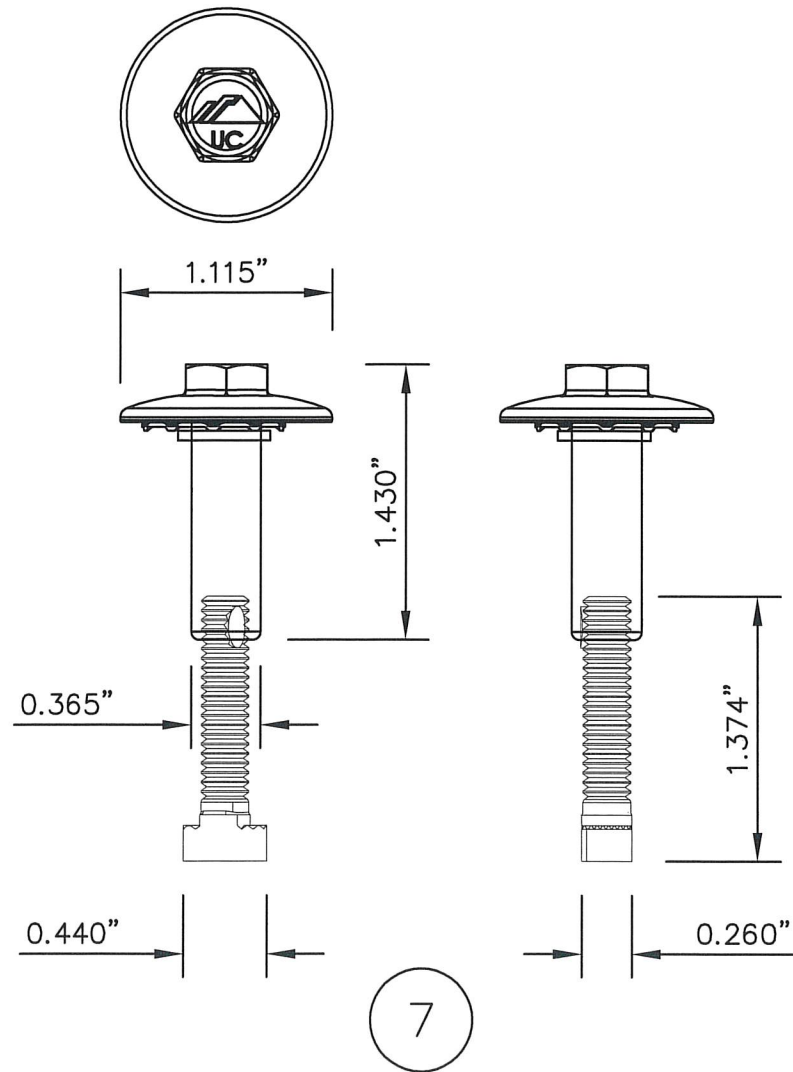
PHONE: (800) 227-9523
info@ironridge.com
28357 INDUSTRIAL BLVD.
HAYWARD, CA 94545

DWG: XR-FF2
SHEET: 5/7

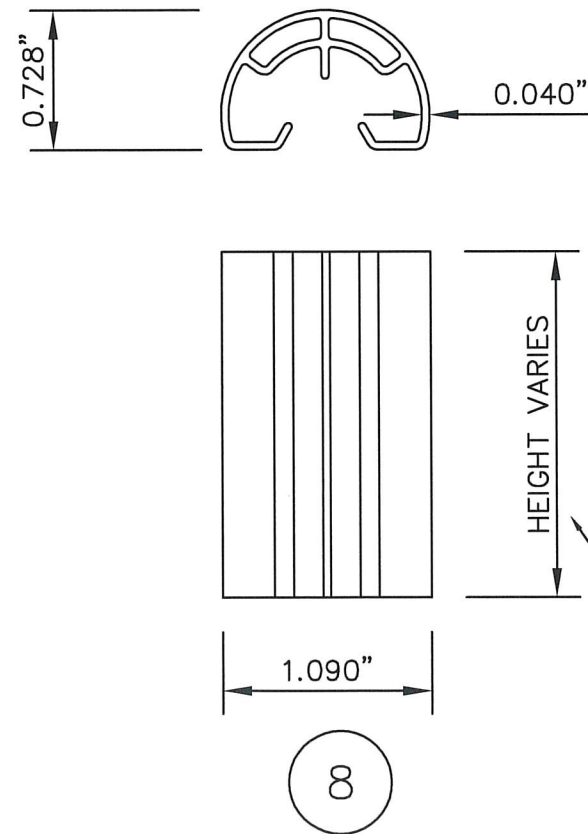
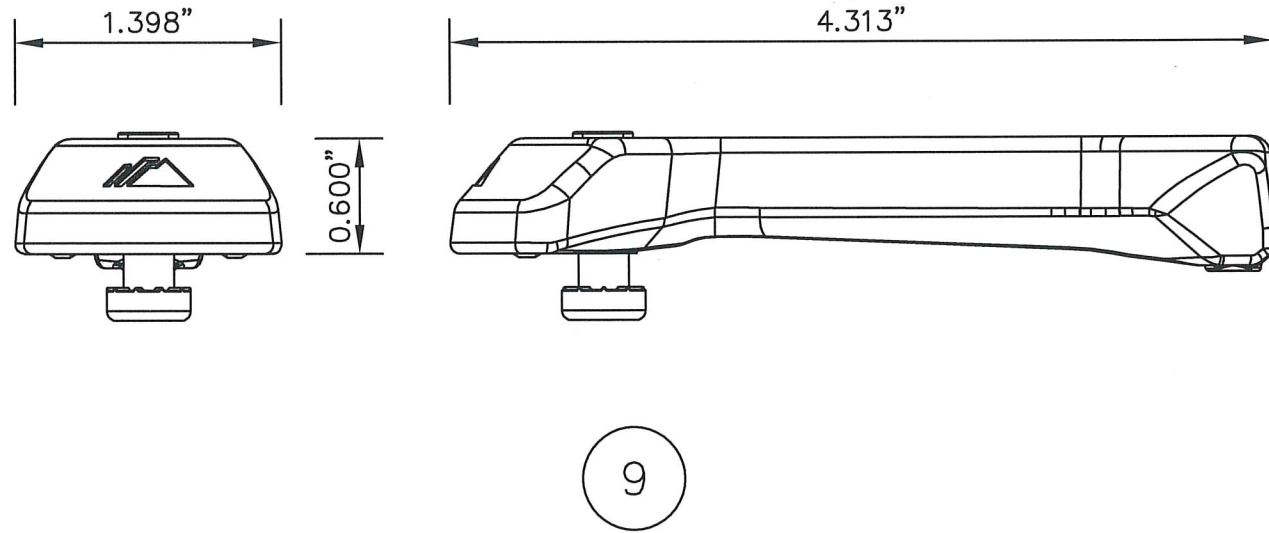
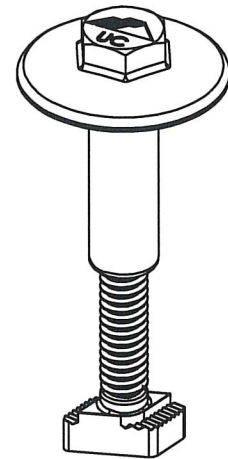
IRONRIDGE XR FLUSH MOUNT PHOTOVOLTAIC PANEL RACKING SYSTEM WITH IRONRIDGE FLASHFOOT2 ROOF ATTACHMENTS

BILL OF MATERIALS- XR System		
#	DESCRIPTION	MATERIALS/NOTES
1	XR-10 RAIL	6000 SERIES AL
2	XR-100 RAIL	6000 SERIES AL
3	XR-1000 RAIL	6000 SERIES AL
4	XR-10 BOSS SPLICE	6000 SERIES AL & 300 SERIES SS
5	XR-100 BOSS SPLICE	6000 SERIES AL & 300 SERIES SS
6	XR-1000 BOSS SPLICE	6000 SERIES AL & 300 SERIES SS
7	UFO UNIVERSAL MODULE CLAMP	300 SERIES SS
8	STOPPER SLEEVE	6000 SERIES AL
9	CAMO HIDDEN END CAM	300 SERIES AL & 300 SERIES SS
10	3/8" X 1" SQUARE BOLT BONDING HARDWARE	300 SERIES SS
11	3/8" X 1" T-BOLT BONDING HARDWARE	300 SERIES SS
12	XR-10 RAIL END CAP (OPTIONAL)	POLYMERIC
13	XR-100 RAIL END CAP (OPTIONAL)	POLYMERIC
14	XR-1000 RAIL END CAP (OPTIONAL)	POLYMERIC

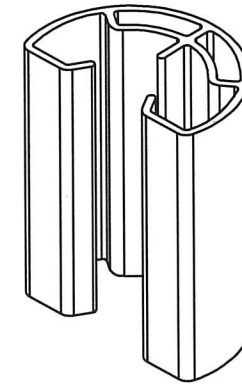
FOR 6000 SERIES EXTRUSIONS $F_{UT}=38$ ksi min, $F_Y=34$ ksi min.
FOR 300 SERIES STAINLESS STEEL $F_Y=65$ ksi min.



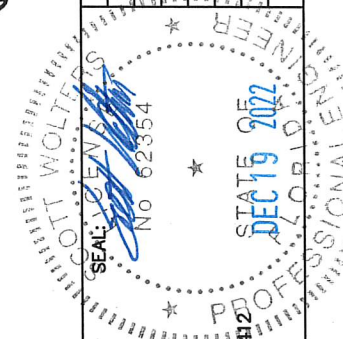
7



8



HEIGHT VARIES TO MATCH PV PANEL HEIGHT.



SCOTT WALTERS
FL PE# 62354
WALTERS ENGINEERING
(COA# 27194)
15211 97TH ROAD N
WEST PALM BEACH, FL 33412
(561) 225-1982

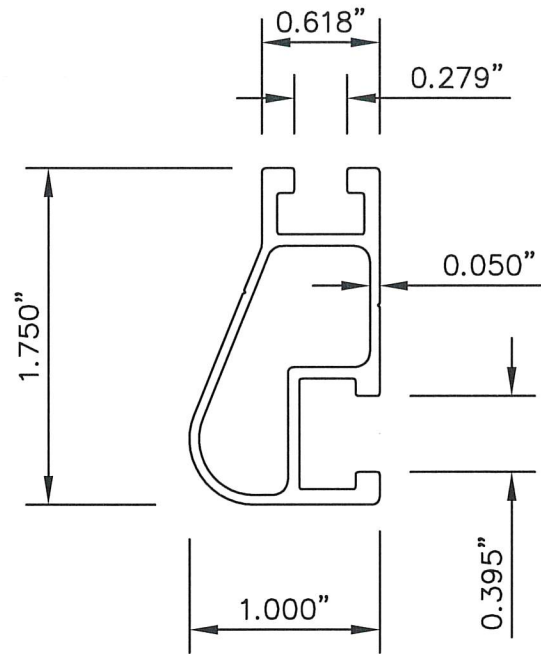
IRONRIDGE
PHONE: (800) 227-9523
info@ironridge.com
28357 INDUSTRIAL BLVD.
HAYWARD, CA 94545

DWG: XR-FF2
SHEET: 6/7

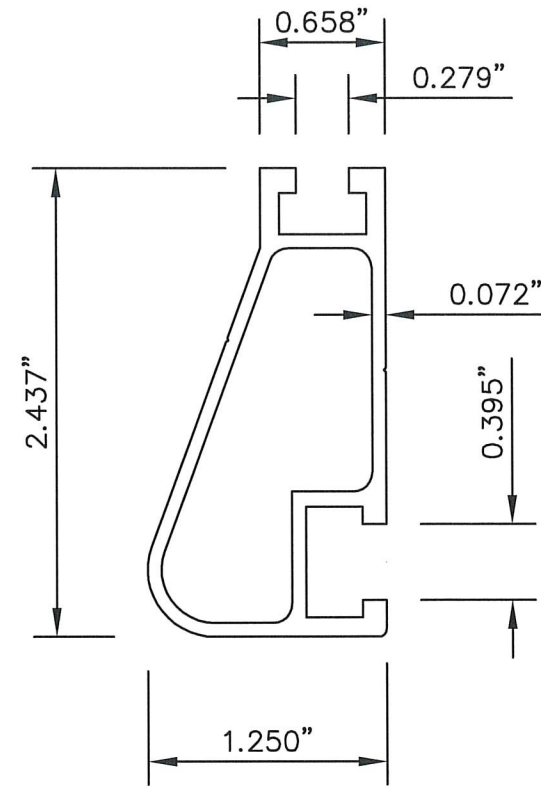
REV.#	DATE
1	12/19/22

1ST SUBMITTAL
PRINTS ISSUED FOR

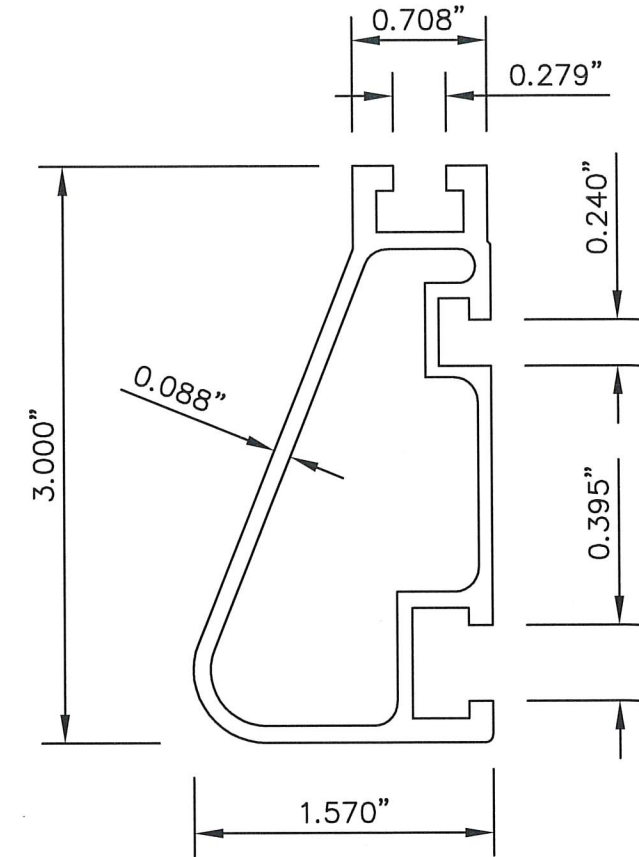
**IRONRIDGE XR FLUSH MOUNT PHOTOVOLTAIC PANEL RACKING SYSTEM
WITH IRONRIDGE FLASHFOOT2 ROOF ATTACHMENTS**



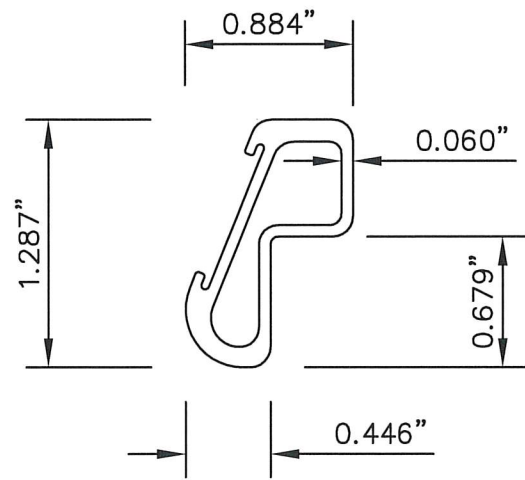
1



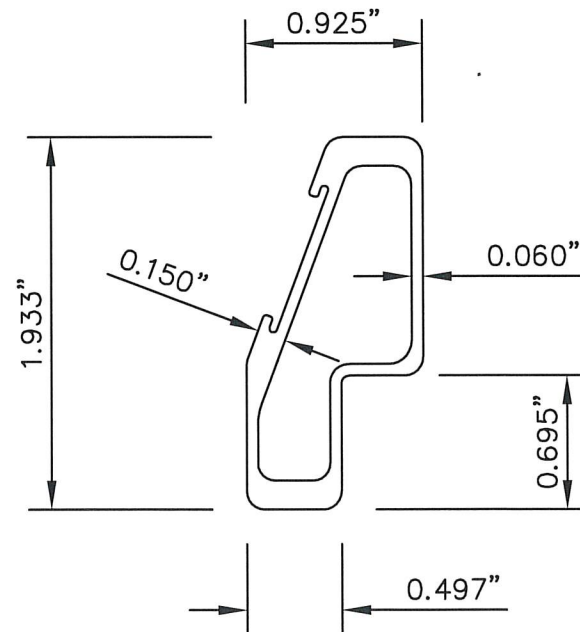
2



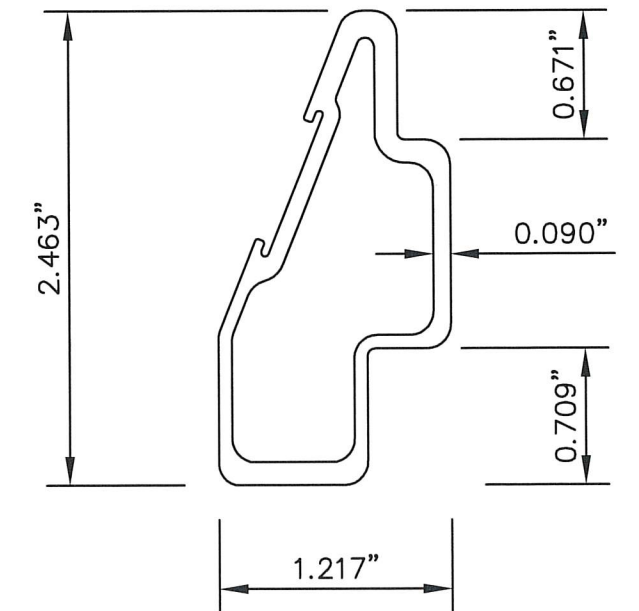
3



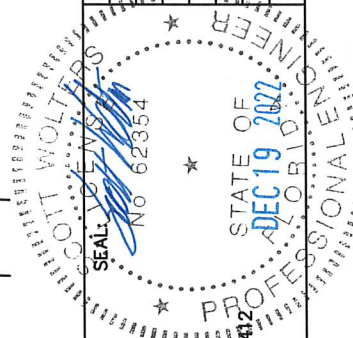
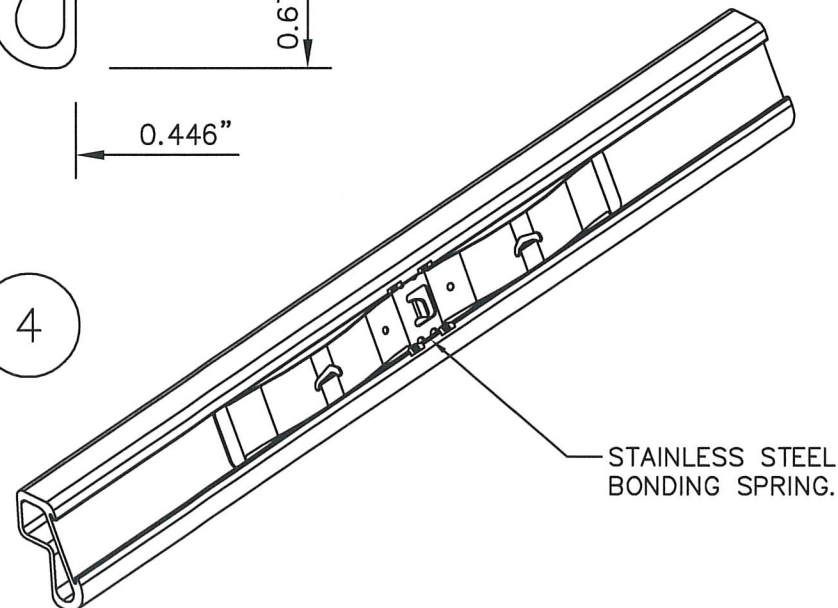
4



5



6



SCOTT WOLTERS
FL PE# 62354
WOLTERS ENGINEERING
(COA# 27194)
15211 97TH ROAD N 33412
WEST PALM BEACH, FL 33412
(561) 225-1982

IRONRIDGE
28357 INDUSTRIAL BLVD.
HAYWARD, CA 94545
PHONE: (800) 227-9523
info@ironridge.com

DWG: XR-FF2
SHEET: 7/7

REV.#	DATE
1	12/19/22
2	
3	
4	
5	
6	
7	
8	
9	
10	
11	
12	
13	
14	
15	
16	
17	
18	
19	
20	
21	
22	
23	
24	
25	
26	
27	
28	
29	
30	
31	
32	
33	
34	
35	
36	
37	
38	
39	
40	
41	
42	
43	
44	
45	
46	
47	
48	
49	
50	
51	
52	
53	
54	
55	
56	
57	
58	
59	
60	
61	
62	
63	
64	
65	
66	
67	
68	
69	
70	
71	
72	
73	
74	
75	
76	
77	
78	
79	
80	
81	
82	
83	
84	
85	
86	
87	
88	
89	
90	
91	
92	
93	
94	
95	
96	
97	
98	
99	
100	